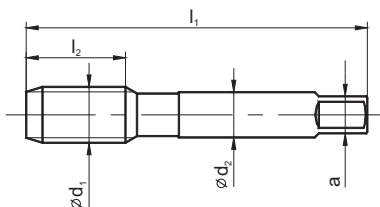


## Gwint rurowy walcowy G, DIN-ISO 228



HSS

DIN  
5157



KPL/2



Nr1

F

Rodzaj materiału obrabianego



Typ otworu




<math>< 2,5d</math>

Rodzaj materiału

HSS

Rodzaj powłoki

Nakrój

G	$\varnothing d_1$	1"/P	P	$l_1$	$l_2$	$l_3$	$\varnothing d_2$	a		Norma	INDEX
										Tol.	
G1/16	7,723	28	0,907	56	22	26	6	4,9	6,80	3121	○
G1/8	9,728	28	0,907	63	20	27	7	5,5	8,80	3123	●
G1/4	13,157	19	1,337	70	22	32	11	9,0	11,80	3127	●
G3/8	16,662	19	1,337	70	22	32	12	9,0	15,25	3129	●
G1/2	20,955	14	1,814	80	22	35	16	12,0	19,00	3131	●
G5/8	22,911	14	1,814	80	22	-	18	14,5	21,00	3133	●
G3/4	26,441	14	1,814	90	22	-	20	16,0	24,50	3135	●
G7/8	30,201	14	1,814	90	22	-	22	18,0	28,25	3137	●
G1	33,249	11	2,309	100	25	-	25	20,0	30,75	3139	●
G1.1/8	37,897	11	2,309	125	36	-	28	22,0	35,50	3141	○
G1.1/4	41,910	11	2,309	125	36	-	32	24,0	39,50	3143	●
G1.3/8	44,323	11	2,309	125	36	-	36	29,0	41,75	3145	○
G1.1/2	47,803	11	2,309	140	40	-	36	29,0	45,25	3147	●
G1.3/4	53,769	11	2,309	140	40	-	40	32,0	51,00	3151	○
G2	59,614	11	2,309	160	40	-	45	35,0	57,00	3155	○