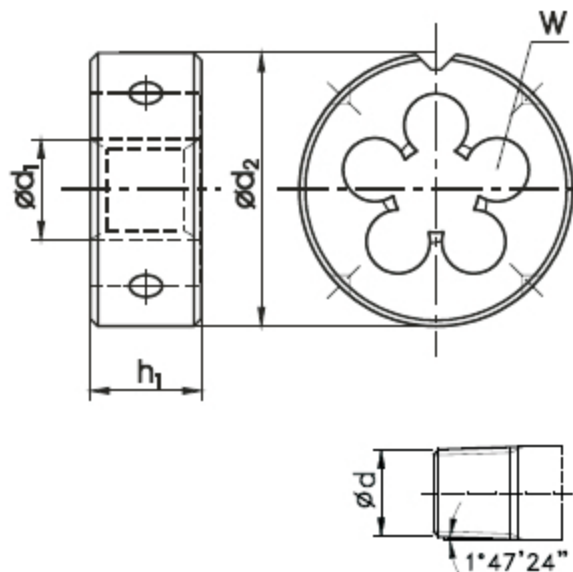
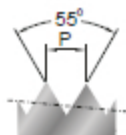


Gwint rurowy stożkowy R, ISO-7/1

Whitworth pipe external thread R, ISO-7/1

Kegelliges Whitworth-Rohr-Außengewinde R, ISO-7/1



DIN-EN 24 230



Wykonanie

Execution

Ausführung

Rodzaj materiału

Quality of material

Qualität

Nakrój

Chamfer

Anschnitt

Tolerancja

Tolerance

Toleranz

HSS

2P

R

ϕd_1

1"/P

P

$\phi d_2 \times h_1$

W

ϕd

INDEX

N1-120001

R-1/8"

9,73

28

0,907

30 x 11

5

9,48

3423

•

R-1/4"

13,16

19

1,337

38 x 14

5

12,78

3427

•

R-3/8"

16,16

19

1,337

45 x 18

5

16,26

3429

•

R-1/2"

20,96

14

1,814

55 x 22

5

20,44

3431

•

R-3/4"

26,44

14

1,814

55 x 22

6

25,85

3435

•

R-1"

32,25

14

2,309

65 x 25

7

32,60

3439

•